



BROOKLAND
CORNERSTONE FOR THE FUTURE
EST. 1894

COMMUNITY FEATURES

- Interactive Leasing Offices
- Private Resident Controlled Building, Parking & Elevator Access
- Rooftop Terraces with dynamic Skyline Views
- Sleek Fire Pits
- Wi-Fi Lounge with Refreshment Station
- Conference Room and Collaborative Work & Maker Spaces
- Resort Style Pool with Sunning Ledge and Fountains
- Private Storage
- Parcel Delivery Area with Refrigerated units for perishable items
- Pet friendly living with Pet Spa
- 100% Smoke Free Living
- Trash Chutes in each Building
- Inviting Outdoor Dining & Grills
- Post Stop and Mail Center
- Contemporary Outdoor Kitchen
- Relaxing Social Lounge with Televisions
- Multi-Media Outdoor Living
- Modern Gourmet Entertaining Kitchen in clubroom
- Convenient Bike Storage and Work Stations
- Yoga, Pilates & Barre Studio
- State of the Art, Commerical Fitness Center
- Close proximity to Columbia's Riverfront Park
- Vibrant Mixed-Use Community including Retail, Restaurants, Office and Community spaces

#livebrookland



@BROOKLAND_SC



@BROOKLANDSC

LIVEBROOKLAND.COM

E

**2 bedrooms/2 baths
~1268 sq.ft.**

RESIDENCE AMENITIES

Gourmet Open Kitchens Featuring:

- Striking White Quartz Countertops
- Upgraded Pull Down Kitchen Faucets with Modern Single Basin Sink
- Stainless Steel Energy Star Appliances
- Built in Microwaves
- Discreet Under Cabinet Lighting
- Custom, Oversized Wood Cabinetry with Decorative Hardware
- Polished Kitchen Islands highlighted with Decorative Pendant Lighting*
- Dual hued European style Cabinetry
- Built-In Pantries
- Bar Top Seating*
- Tiled Backsplash

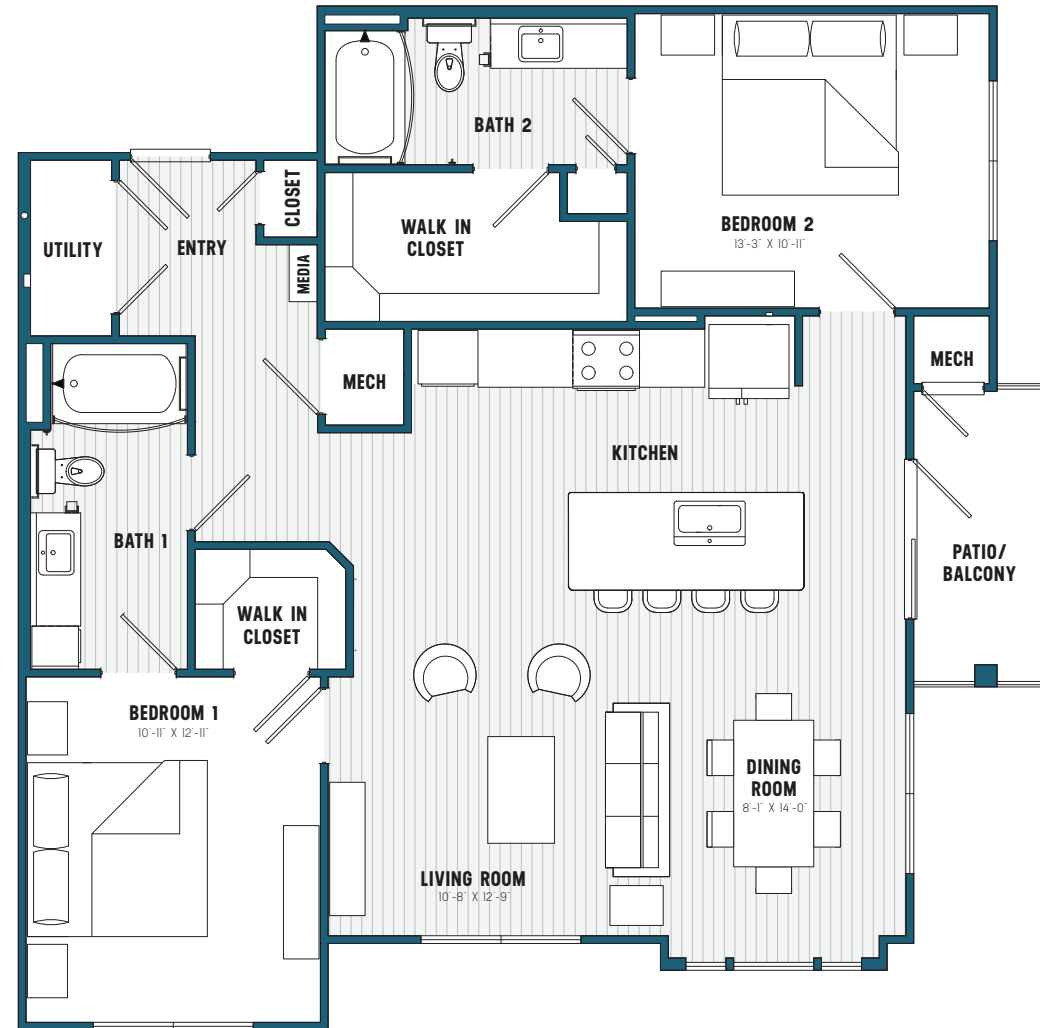
Refined Bathrooms Including:

- State of the Art Square Undermount Bathroom Sinks
- Tiled Stand-In Showers
- Linen Closets*
- Stylish Chrome Faucets
- Oversized Garden Tubs
- Curved Shower Rods

Impeccably Curated Floorplans:

- Predominately 9 Foot Ceilings including heights ranging from 10-14 Foot Ceilings*
- Impressive Floor to Ceiling Windows*
- Laundry Rooms with W/D Connections
- Private Patios & Balconies
- Breathtaking Skyline Views*
- Fiber Optics
- Custom, Built In Shelving*
- Oversized, Low-E Energy Star Windows
- Spacious, Dress In Closets
- Built In Media Shelves
- USB Charging Stations
- Vaulted, Penthouse Ceilings*
- 8 Foot Entry Doors
- Wood Inspired Flooring in Living and Kitchen Areas and Kitchen
- Designer, Energy Star Lighting & Ceiling Fan in Living Areas

*denotes availability in select units



The Developer, its successors, or assigns reserve the right without notice to any purchaser or respective purchasers, to alter or modify preliminary plans, specifications, prices, materials, finishes, standard features, upgrade features, and other descriptions of the project including amenities, restrictions, and any other matters that may affect the project and unit ownership. Photographs, renderings, and other depictions are illustrative and conceptual only. All renderings are illustrative only and are subject to change. Plans are preliminary and are not to scale. Square footage is approximate and should not be relied upon as a representation, express or implied. Floor plans may vary per residence, elevation, type, and may be in mirror image. Unit does not include washer, dryer, furniture, or furnishings.